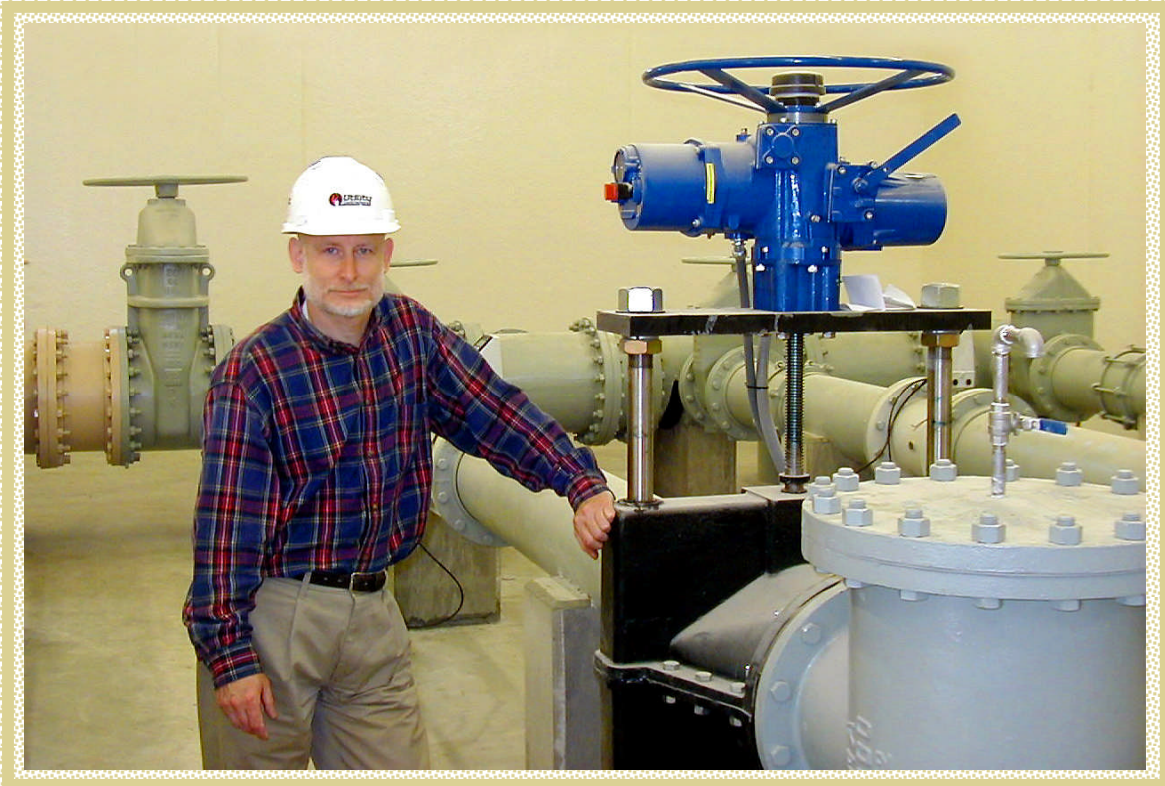




# ONYX VALVE

- ♦ Automated Valves
- ♦ Manual Hand Wheel Valves
- ♦ Duckbill Check Valves
- ♦ Wafer-Style Check Valves
- ♦ Pressure Sensors
- ♦ Expansion Joints
- ♦ Replacement Sleeves



**We sell More than Valves, We sell Solutions!**

835 Industrial Hwy Cinnaminson, NJ 08077

Phone: 856-829-2888 Fax: 856-829-3080

Web: [www.onyxvalve.com](http://www.onyxvalve.com)

Email: [info@onyxvalve.com](mailto:info@onyxvalve.com)

## Automated Valves



### GSS

- ◆ Shell & Tube Design
- ◆ Slip-On Connection
- ◆ Sizes 1/2" to 4"



### GSF & GSD

- ◆ Shell & Tube Design
- ◆ Flange Connection
- ◆ Sizes 1" to 14"



### CAR

- ◆ Enclosed Housing
- ◆ Air Actuator
- ◆ Full Round
- ◆ Sizes 1/2" to 3"



### CAP

- ◆ Enclosed Housing
- ◆ Air Actuator
- ◆ Pre-Pinched
- ◆ Sizes 4" to 12"



### DAC

- ◆ Enclosed Housing
- ◆ Air Actuator
- ◆ Full Round
- ◆ Sizes 1" to 30"



### DAO

- ◆ Open Frame
- ◆ Air Actuator
- ◆ Full Round
- ◆ Sizes 1" to 24"



### CER & CEP

- ◆ Enclosed Housing
- ◆ Electric Actuator



### DEC

- ◆ Enclosed Housing
- ◆ Electric Actuator
- ◆ Full Round
- ◆ Sizes 1" to 30"

## Pneumatic Actuators



### **PFO Actuator**

- ◆ Fail-open actuation
- ◆ Sizes #8 to #200

### **PFC Actuator**

- ◆ Fail-closed actuation
- ◆ Sizes #8 to #200

### **PFL Actuator**

- ◆ Fail-last actuation
- ◆ Air double acting

## Manual Hand Wheel Valves



### **CHR**

- ◆ Enclosed Housing
- ◆ Full Round
- ◆ Sizes 1/2" to 3"



### **CHP**

- ◆ Enclosed Housing
- ◆ Pre-Pinched
- ◆ Sizes 4" to 12"



### **DHC**

- ◆ Enclosed Housing
- ◆ Full Round
- ◆ Sizes 1" to 24"



### **DHA**

- ◆ Enclosed Housing
- ◆ Full Round
- ◆ Sizes 1" to 12"



### **DHO**

- ◆ Open Frame
- ◆ Full Round
- ◆ Sizes 1" to 24"

## Duckbill Check Valves



### DBS

- ◆ Slip-on check valve
- ◆ Slip-On Connection
- ◆ Sizes 1" to 60"



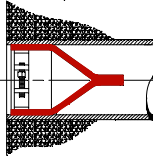
### DBF

- ◆ Flanged check valve
- ◆ Flange Connection
- ◆ Sizes 1" to 60"



### DBCP

- ◆ In-line check valve
- ◆ Flange Connection
- ◆ Sizes 1" to 24"



### DBRS

- ◆ Slip-in check valve
- ◆ Inside of pipe installation
- ◆ Sizes 2" to 60"



### DBMJ & DBMJ-F

- ◆ Fully enclosed check valve
- ◆ Flange Connection
- ◆ Sizes 3" to 60"

## Wafer-Style Check Valves



### WCV

- ◆ Inserted between two mating flanges
- ◆ Flange Connection
- ◆ Sizes 1" to 60"

## Pressure Sensors



### PSW

- ◆ Fits inside bolt pattern of mating flanges.
- ◆ Sizes 1" to 36"



### PSS

- ◆ Threaded ends connection
- ◆ Sizes 1/2" to 2"



### PSR

- ◆ Flange Connection
- ◆ Sizes 1" to 42"



### PSQ

- ◆ Quick disconnect ends connection
- ◆ Sizes 1" to 4"

## Pump Controls



**Smart Box 3** is designed to ensure the progressing cavity pumps within operating limits and further protects the pumps from damages caused by following factors;

- ◆ High pressure over the design limits can stall or burn out the motor.
- ◆ Run dry conditions interrupt the flow of liquids that is needed to dissipate heat, melting the stator.
- ◆ Seal flush failure burns up the shaft seal causing the stuffing box to leak.

**Smart Box 3** is not only easy to use, but versatile enough to combine with **Onyx Pressure Sensors** to process viscous fluids, suspended solids, abrasive, corrosive and volatile liquids.

## Expansion Joints



### Filled Arch Expansion Joints

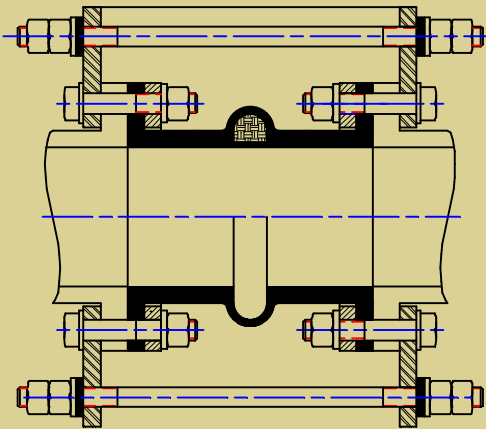
Filled arch expansion joints have all the functional characteristics of open arch expansion joints and additionally, with filled arch construction, it prevents the collection of solid materials that may settle and remain in the archway.

- ◆ **SFA ( Single Filled Arch )**
- ◆ **DFA ( Double Filled Arch )**

### Open Arch Expansion Joints

Open arch expansion joints have greater movement capability and with a minimum face-to-face dimension, open arch expansion joints can be remedies to critical alignment difficulties in limited spaces.

- ◆ **99 SFA ( Single Wide Arch )**
- ◆ **99 TFA ( Twin Wide Arch )**



### Control Rods Units

The flexible rubber sleeves of expansion joints, filled arch or open arch construction must be installed in piping system that are properly anchored so that it may not be subjected to compression or elongation of piping movement. Control Rods Units offers a competitive pricing solution to remedy this problem and protects the rubber sleeve from further damage.

## Replacement Sleeves



**Onyx Valve Co.** manufactures high standard quality replacement sleeves for various applications and many other popular brands.

With competitive pricing and fast delivery, our replacement sleeves gives you the best option to fight abrasive, corrosive and volatile fluids and slurries.

### **Materials available:**

- ◆ Pure Gum Rubber
- ◆ Nitrile
- ◆ Chloroprene
- ◆ White Odorless and Tasteless  
FDA Food grade Rubber
- ◆ EPDM
- ◆ ChloroSulfonated Polyethylene
- ◆ Butyl
- ◆ Fluoro Carbon ( Viton )



## **ONYX VALVE**

**835 Industrial Hwy  
Cinnaminson, NJ 08077  
Phone: 856-829-2888  
Fax: 856-829-3080  
[www.onyxvalve.com](http://www.onyxvalve.com)**